

M25 junction 10/A3 Wisley interchange improvement project

A245 works update: March 2025

We're writing to update you on the scheme's progress and upcoming changes to the A245 roadwork layout. This update includes information on:

- What we've achieved since our last update in December
- Next phase of work on the A245 from spring 2025
- Upcoming closures on Seven Hills Road North and South
- Available traffic movement phases from spring 2025
- What is still to come

What we've achieved since our last update in December

We've been making significant progress across the entire scheme, including opening the new junction 10 gyratory to traffic, demolishing both old gyratory bridges and completing the concrete deck on the new Cockcrow heathland bridge.

We have also finished the gas and BT diversions across the entire scheme, which has allowed us to start the A3 widening works.

On the A245, we've completed the eastbound widening work and have opened the road back up to two lanes in both directions between the Seven Hills Road junction and the Painshill roundabout.



Figure 1: A245 on approach to Painshill Roundabout

The next phase of work on the A245 from spring 2025

In our next phase of work, we'll be completing the activities needed to fully open the New Byfleet Road to two-way traffic and will also be installing traffic islands at the Seven Hills Road junction in readiness for new traffic signals. The New Byfleet Road is a short length of road by Feltonfleet School which will replace the existing A245 / Old Byfleet Road junction.

The underlying reason for making changes here is to reduce the number of traffic signal phases from four to three. In doing so, it increases the capacity on the east / west A245, which will improve the traffic flows and reduce queuing.

As we anticipate this work to be disruptive, we have planned it to take place during the Easter holidays, starting on **Friday 28 March and finishing by Tuesday 22 April 2025**. This is when traffic flows are lightest in the area. Once this phase of work is complete:

- The New Byfleet Road will be fully opened in both directions and will be accessed from the westbound A245 via the new slip road.
- Feltonfleet School will have its new access and egress route complete.
- There will no longer be an ability to turn right from B365 Seven Hills Road North onto the westbound A245 towards Byfleet or go straight across the junction. Instead, you'll need to turn left and travel to the Painshill roundabout and return.
- The traffic signals at the A245/Seven Hills Road junction will be reduced from four to three phases.

To allow us to safely complete this phase of work, we will need to install a 24/7 road closure on both Seven Hills Road North and South.



Figure 2: A245 on approach to Seven Hills Junction

Upcoming closures on Seven Hills Road North and South

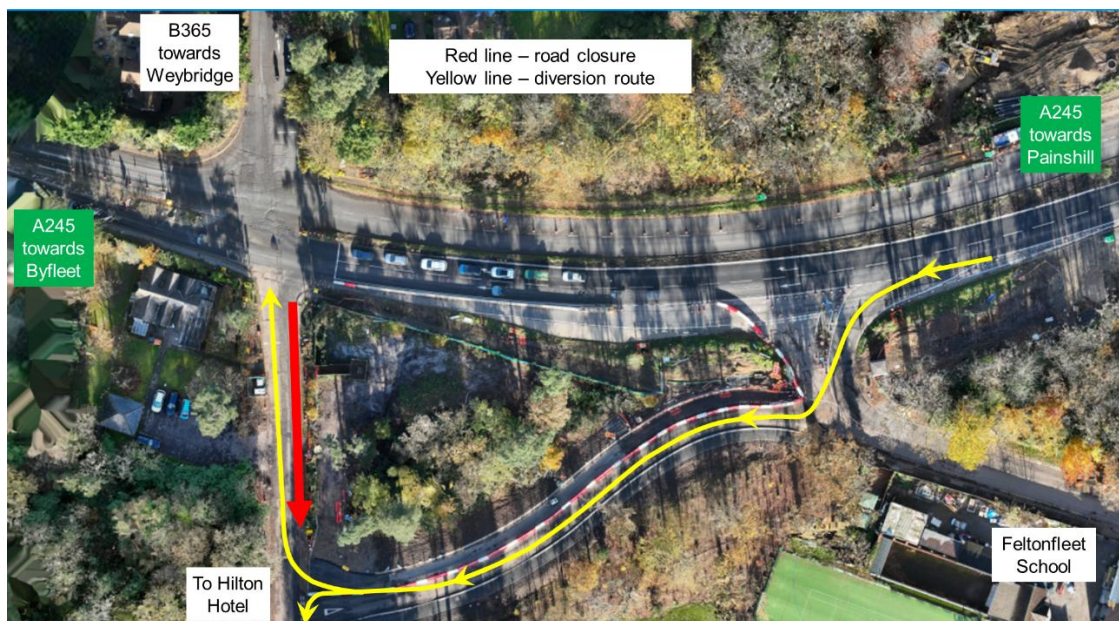
Friday 28 March to Tuesday 22 April 2025: Seven Hills Road South southbound closure

To safely complete the work needed to open the New Byfleet Road to two-way traffic, we need to install a 24/7 southbound closure on Seven Hills Road South. The closure will be in place from:

- **8pm on Friday 28 March until 6am on Tuesday 22 April 2025** to coincide with school Easter holidays.

A short diversion will be in place from the westbound A245 via the New Byfleet Road, and we apologise for any inconvenience caused.

Pedestrian access will be maintained throughout the duration of these works.



Friday 4 April to Tuesday 22 April 2025: B365 Seven Hills Road North southbound closure

To safely complete the installation of traffic islands at the A245 / Seven Hills Road junction, we'll be installing a 24/7 southbound closure on Seven Hills Road North between the Queens Road roundabout and the A245. The closure will be in place from:

- **8pm on Friday 4 April until 6am on Tuesday 22 April 2025.**

During this closure, a clearly signed diversion will be in place via the B365 Seven Hills Road North, A317 Queens Road to Hersham, A244 Esher Road and Lammas Lane to Esher, and then south on the A307 Portsmouth Road to Cobham to join the A245.

We would like to apologise for any inconvenience these closures may cause you. During all our closures access for residents will be maintained at all times.

Having the closure in place 24/7 for this two-week period enables us to safely complete the work in the space available.

Traffic movements available during the next phases of work

Between 28 March 2025 and summer 2025, there will be four different phases of roadworks, and each phase will allow certain traffic movements. These movements are illustrated below.

Phase 1: 8pm Friday 28 March to 8pm Friday 4 April 2025

All routes available, as they are now, except for a short length southbound on Seven Hills Road South. Alternative access to Hilton Hotel and Cobham Vets will be via the New Byfleet Road.



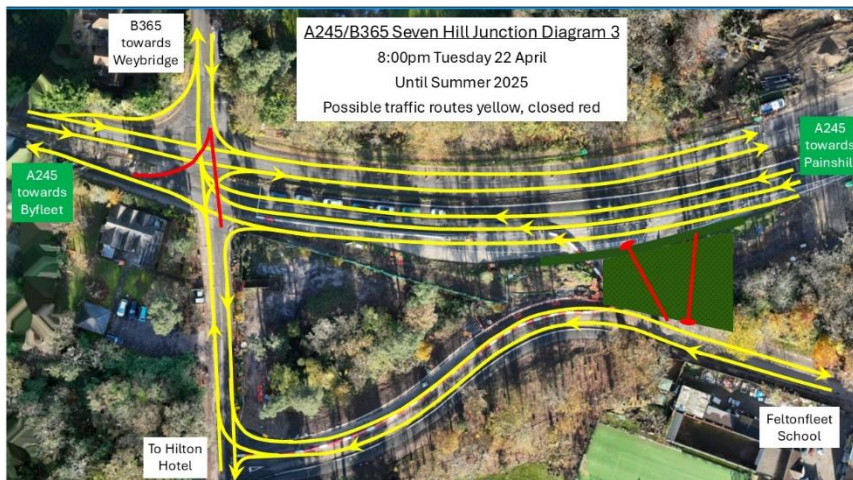
Phase 2: 8pm Friday 4 April to 6am Tuesday 22 April 2025

Routes will be as they are in phase one, except the southbound B365 Seven Hills Road will be closed from the Queens Road roundabout to the A245.



Phase 3: 8pm Tuesday 22 April to summer 2025

All southbound traffic on the B365 Seven Hills Road North will have to turn left onto the A245 towards Painshill. They will not be able to go straight ahead or turn right.



Phase 4: summer 2025 onwards – permanent configuration

All southbound traffic on the B365 Seven Hills Road North will have to turn left onto the A245 towards Painshill. They will not be able to go straight ahead or turn right.

Feltonfleet School access and egress will be from Seven Hills Road south only.



What is still to come

We're targeting the end of summer 2025 to complete all our work on the A245 and the Painshill roundabout. After our work over the Easter holidays, we'll be:

- Completing the final tie in of the westbound A245 widening work and the slip road to Seven Hills Road South
- Completing the installation of new traffic signals at both the Painshill roundabout and A245/Seven Hills Road junction
- Completing the widening on both the eastbound A245 and opening the northbound A3 exit slip at Painshill to three lanes
- Constructing laybys on the Painshill roundabout



Figure 3: B365 Seven Hills Road Junction with A245

More information on these will be shared in our next update.

We continue to work very closely with Surrey County Council and utility providers to reduce the impact our work is having on local services in the area.

Jonathan Wade, National Highways Senior Project Manager for the M25 Junction 10/A3 improvement project, said, *“I want to thank the local community for their continued patience, and we really do recognise that our works are disruptive. We understand that nobody likes their journeys being delayed because of queuing through roadworks. We will complete the next stages of our work safely and as soon as we possibly can.”*

Weekend closures of the A3

We recently closed the M25 for a whole weekend for the fifth and last time, although there will still be some overnight closures. However, we still need to completely close parts of the A3 around the M25 junction 10.

The first of these coincides with the April A245 works. The A3 between the M25 junction 10 and A245 Painshill roundabout will be completely closed in both directions from **9pm Friday 11 April until 6am Monday 14 April 2025**.

Diversions will be in place during this time. Please check our webpage in the coming weeks for more information on the A3 closure.

If you would like more information about any of the works we are undertaking, please contact us:

By email at: m25j10@nationalhighways.co.uk.

By phone 24/7 National Highways Customer Contact Centre on 0300 123 5000.

Don't forget, you can also follow us on social media via our [Facebook](#) and [X](#) pages.

www.nationalhighways.co.uk/our-roads/south-east/m25-junction-10